A photograph of an offshore worker in a white hard hat and a high-visibility yellow jacket with reflective stripes, viewed from behind. The worker is looking out at a large offshore wind turbine with three blades, one of which has red and white stripes. The scene is set on a calm blue sea under a clear blue sky. In the background, another offshore structure is visible.

Ems Maritime Offshore Solutions from a single source.

EHHE - Mandatory Pilot Briefing

Rev. 14.06.2022

EHHE-Mandatory Pilot Briefing

Rev. 14.06.2022

Author/Approved: W. Peterse / J.-H. van Laaten

Restricted to Heliport Eemshaven

The information on this publication serves to increase the safety of operations to and from EHHE.



EHHE-Mandatory Pilot Briefing

Situation

- Located in the north of The Netherlands, close to the German FIR, the airport is surrounded by the wetlands area (Waddenzee) where strict natural management measures are in force for aviation;
- next to this the heliport is situated close to many wind turbines;
- in (and below) the Eelde TMA intensive VFR and IFR training traffic is to be expected.
- South of the harbor area, over the mainland a Low Flying Area is situated (100-200 ft. AGL)
- Also close by are the military areas EHR2(a,b,c) These will be active by NOTAM

For this reason, the approach to and the departure from EHHE are limited to flight crews fulfilling the requirements of the concept for mandatory familiarization and AIP EHHE AD 2.22 Flight Procedures.

IFR and Night VFR procedures are in development.

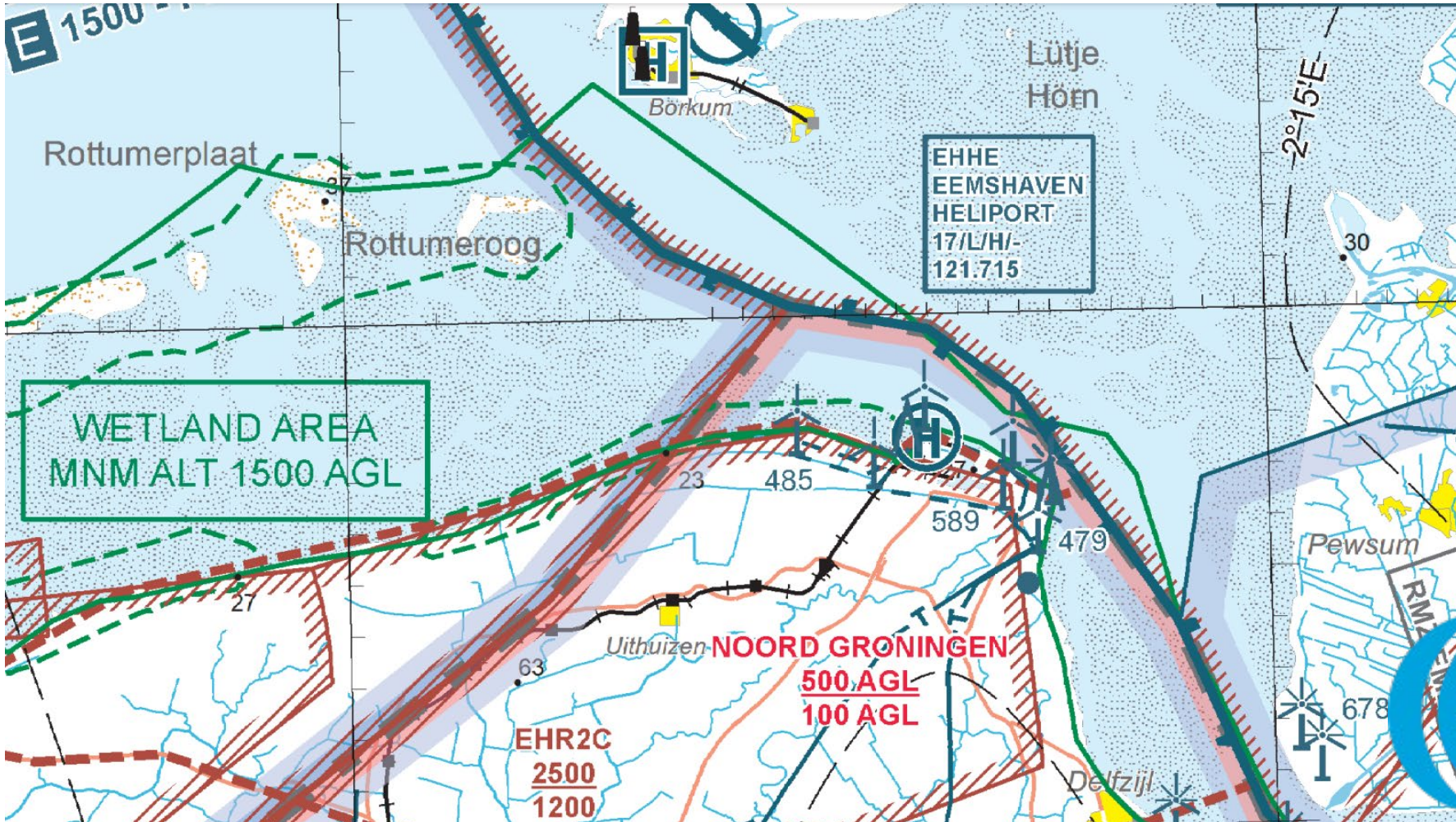
EHHE

Heliport Eemshaven is a heliport open to commercial operators only, both for helicopters as unmanned aerial vehicles.



EHHE-Mandatory Pilot Briefing

Situation



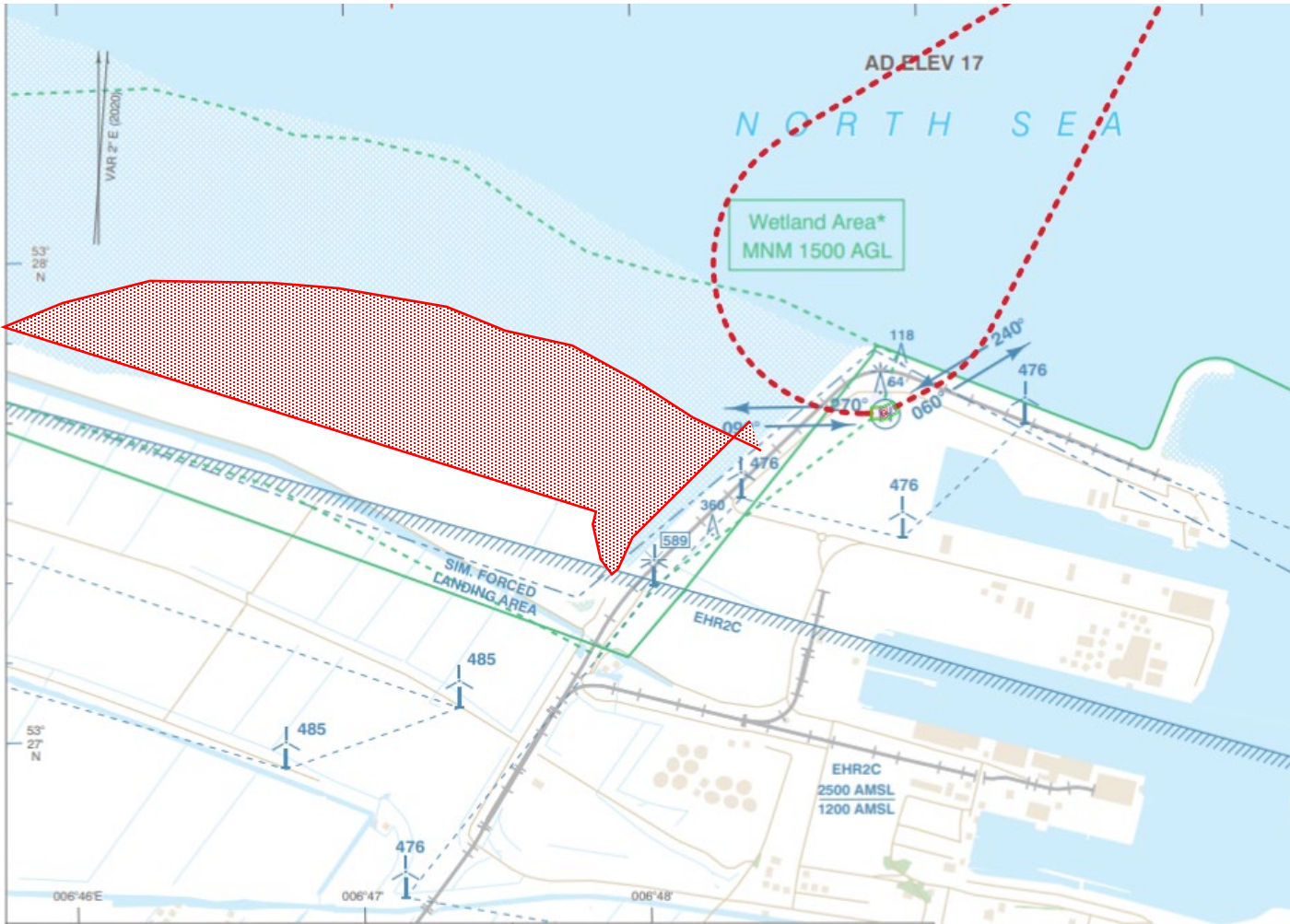
General Information

Name: Eemshaven Heliport
ICAO: EHHE
TLOF elevation: 17 FT.
Lights: TLOF and TWYs
ATC: Eemshaven Radio 121.715 (A/G)
Eelde Approach 120.305 (FIS)
LOA max: 20 meter
RD max: 25 meter (Rotor diameter)
Operating times:- 0800-1700 LT (PPR via OPS)
- Outside OPS hours: O/R during operating times
- Daylight only (UDP)
Immigration: During OPS hours, 1 HR PN via OPS
OPS: +31 6 1568 1312 or
heliport@offshoreservice.de
Fuel: Jet-A1
RFFS: H2

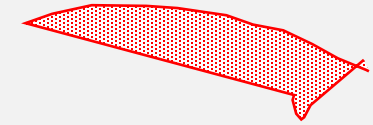
Eemshaven heliport

EHHE-Mandatory Pilot Briefing

Mandatory Routings



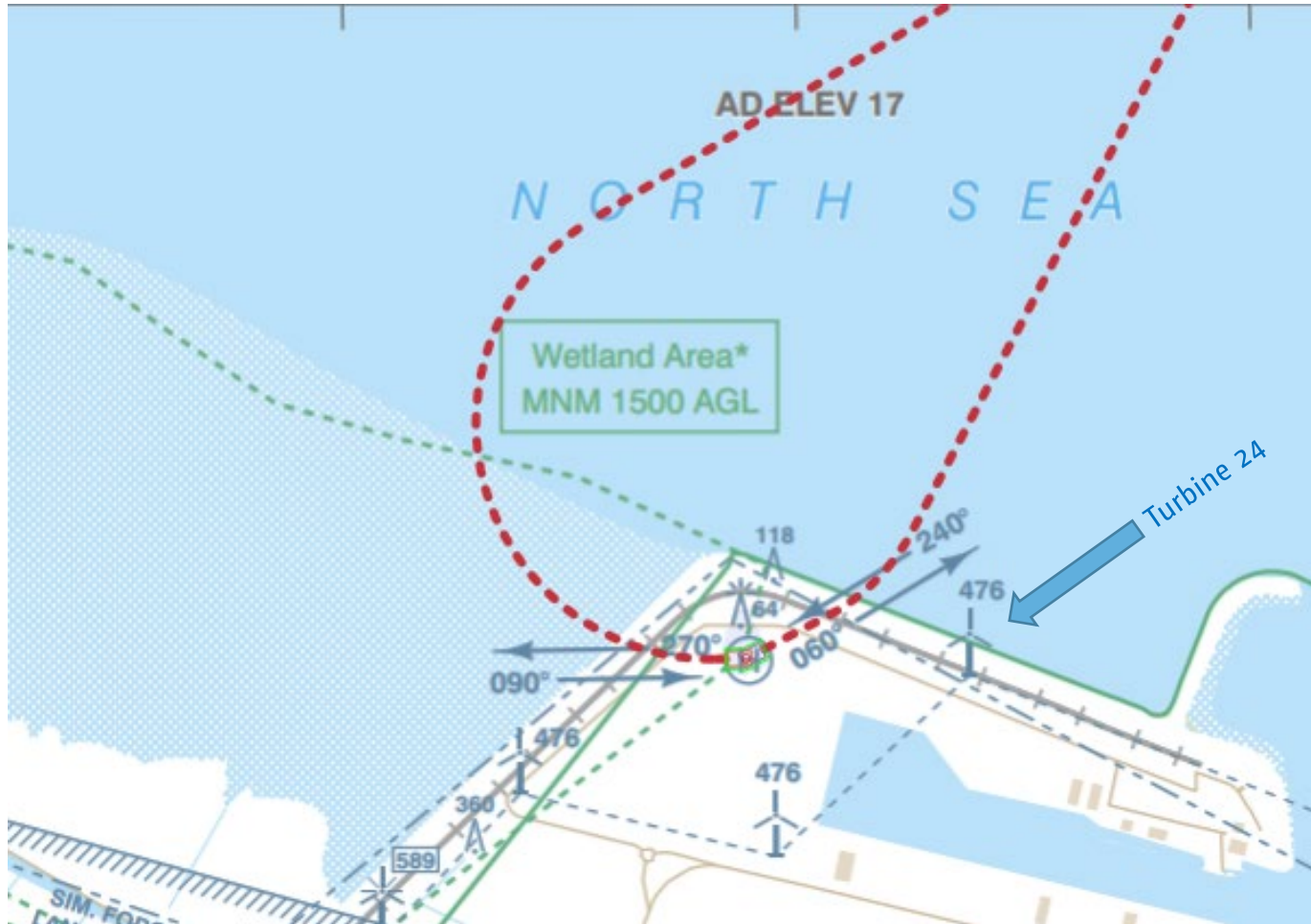
Flood Refuge Area for Birds:



Excp't in case of emergency, do **not** **overfly** this area for any reason!

EHHE-Mandatory Pilot Briefing

Mandatory Routings



Wind Turbine 24

- 476 ft. Elevation, Not Lighted

Easterly Departure/Arrival Route:

- Closest distance to the **center line** is 320 meter (= 4x rotor diameter wind turbine)
- Turbulence might be expected during winds from 090°-180°
- A 3° glide path will pass underneath the rotor diameter

Westerly Arrival Route:

- Take care on possible turbulence when performing a missed approach when entering the easterly departure routing during winds from 090°-180°

Eemshaven
heliport



Solutions from a single source

OFFSHORE - SERVICE - LOGISTICS

Zum Borkumanleger 6
D - 26723 Emden, Germany
+49 (0) 49 21 – 89 07 5286
info@offshoreservice.de

EMO is a company of



group.

Our partner

